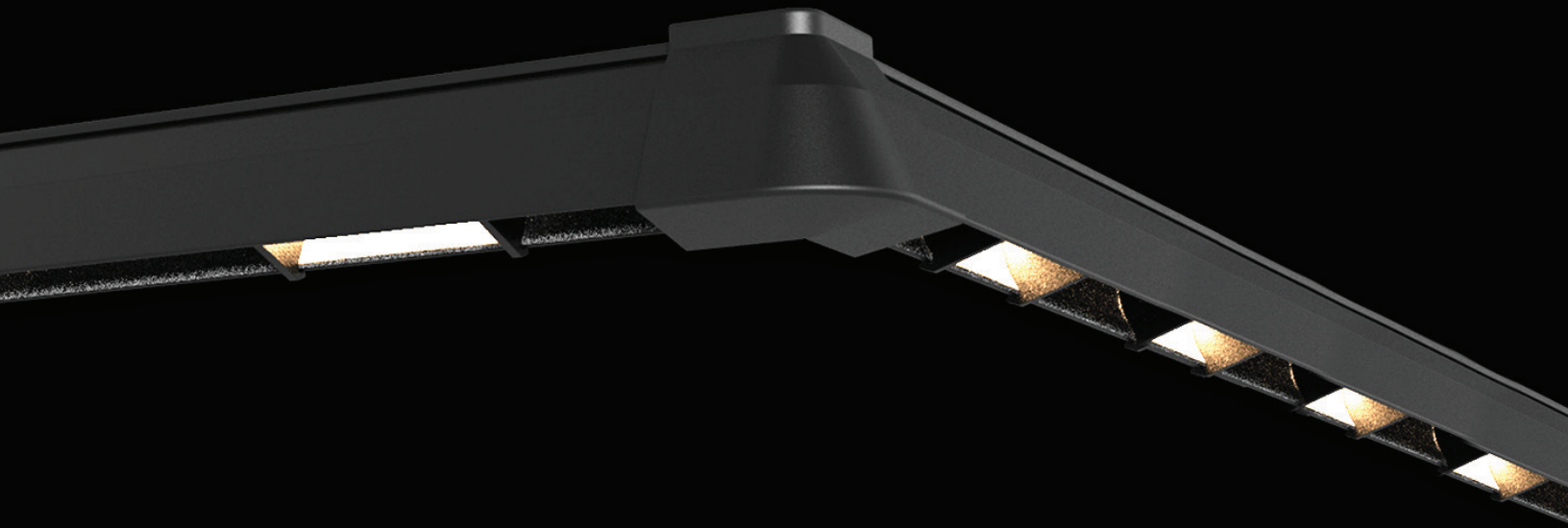




**A Revolutionary New Wall Light System**



**ECLIPSE**



# Eclipse Wall Mount Safety Light

Tivoli's revolutionary wall light system provides an easier way to install a complete system with outstanding features. The Eclipse system features Tivoli's Titanium PCB engine for unmatched quality and consistent color. Amongst the new features is our exclusive light baffle that is used to reduce patron glare, joiner brackets for continuous runs, angled brackets for stairways, and inner/outer brackets for wall corners. Tivoli's new clip mount system allows for easy installation and solutions. The new Eclipse wall mount system is a perfect choice for advanced linear LED aisle lighting.

6" OC				
LED Color	1900°K - 4000K	Red	Blue	Amber
*Lumens/ft	7.2	15.8	7.2	17.7
*Watts/ft	1.2	1.52	1.2	1.8
*Lumen/Watt	6	10.4	6	9.84
Max Run Length	46'	36'	46'	30'

12" OC				
LED Color	1900K - 4000K	Red	Blue	Amber
*Lumens/ft	3.0	5.2	3.0	4.92
*Watts/ft	0.6	.76	.6	.9
*Lumen/Watt	5	4	5	5
Max Run Length	90'	72'	90'	61'

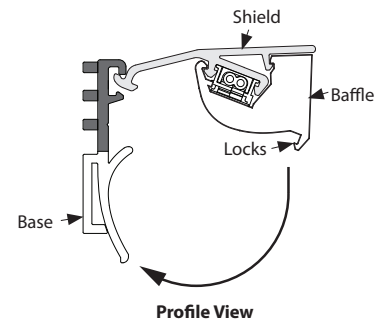
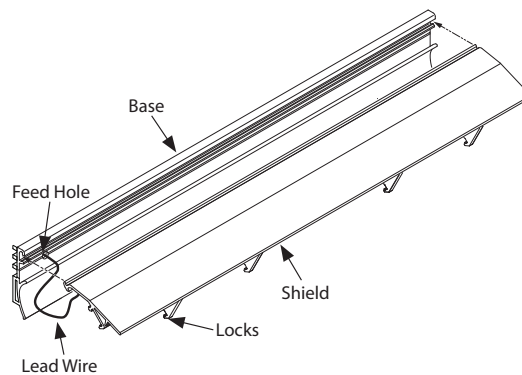
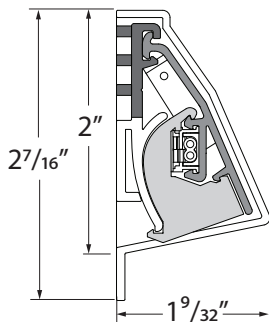
CRI	>80/TYP83
Kelvin Temp	1900K, 2700K, 3000K, 3500K, 4000K (+/-80°K) 3SDCM, Red, Blue, Amber
Rated Life	75,000 hrs.
Order Length	8'
Operating Voltage	12V DC
Power Supply	Class 2
Dimmable	Yes



\*Based on 3000K Sample

Sold in 8' sections

Field cuttable between modules



Proprietary system clips directly to mounting base for easy installation and maintenance.

## ADUL - NON DIMMING

DESCRIPTION	CAT NO	APPLICATION	PRIMARY VOLTAGE	SECONDARY VOLTAGE	CIRCUIT BREAKERS	MAX LOAD	CIRCUIT CAPACITY
ADUL Series Class 2 Transformer	ADUL-80-1-5-12-D	Indoor / Damp	100-277V AC 5ø60 HZ	12V DC	1	60W	5A
	ADUL-150-2-5-12-D				2	2x60W	2x5A
	ADUL-240-3-5-12-D				3	3x60W	3x5A
	ADUL-320-4-5-12-D				4	4x60W	4x5A

## ADUL - 0-10V DIMMING

DESCRIPTION	CAT NO	APPLICATION	PRIMARY VOLTAGE	SECONDARY VOLTAGE	CIRCUIT BREAKERS	MAX LOAD	CIRCUIT CAPACITY
ADUL Series Class 2 Transformer	ADUL-80-1-5-12-DOT	Indoor / Damp	100-277V AC 5ø60 HZ	12V DC	1	60W	5A
	ADUL-150-2-5-12-DOT				2	2x60W	2x5A
	ADUL-240-3-5-12-DOT				3	3x60W	3x5A
	ADUL-320-4-5-12-DOT				4	4x60W	4x5A

## ADUL - DMX SINGLE ADDRESS

DESCRIPTION	CAT NO	APPLICATION	PRIMARY VOLTAGE	SECONDARY VOLTAGE	CIRCUIT BREAKERS	MAX LOAD	CIRCUIT CAPACITY
ADUL Series Class 2 Transformer	ADUL-80-1-5-12-DIN	Indoor / Damp	100-277V AC 5ø60 Hz	12V DC	1	60W	5A
	ADUL-150-2-5-12-DIN				2	2x60W	2x5A
	ADUL-240-3-5-12-DIN				3	3x60W	3x5A

## ADUL - DMX MULTI ADDRESS

DESCRIPTION	CAT NO	APPLICATION	PRIMARY VOLTAGE	SECONDARY VOLTAGE	CIRCUIT BREAKERS	MAX LOAD	CIRCUIT CAPACITY
ADUL Series Class 2 Transformer	ADUL-150-2-5-12-DIN-2	Indoor / Damp	100-277V AC 5ø60 Hz	12V DC	2	2x60W	2x5A
	ADUL-240-3-5-12-DIN-3				3	3x60W	3x5A
	ADUL-320-4-5-12-DIN-4				4	4x60W	4x5A

## INFINITY - MLV / ELV / 0-10V / PWM / TRIAC

DESCRIPTION	CAT NO	APPLICATION	PRIMARY VOLTAGE	SECONDARY VOLTAGE	CIRCUIT BREAKERS	MAX LOAD	MIN LOAD	CIRCUIT CAPACITY
Infinity Series Class 2 Transformer	INF-J-30-1-2.5-12	Indoor / Outdoor	100 - 277V AC	12VDC	1	30W	3W	2.5A
	INF-J-60-1-5-12				1	60W	6W	5A
	INF-J-180-3-5-12				3	3x60W	3x6W	3x5A
	INF-J-300-5-5-12				5	5x60W	5x6W	5x5A

## Recommended Dimmers

### DIMMING - 0-10V

DESCRIPTION	CAT NO	APPLICATION	INPUT VOLTAGE	OUTPUT VOLTAGE	MAX LOAD
0-10V Dimmer	DIM-LD-010	Indoor	12V/24V DC	12V/24V DC	30 mA max. output (sink only)

### DIMMING - MLV

DESCRIPTION	CAT NO	APPLICATION	INPUT VOLTAGE	OUTPUT VOLTAGE	MAX LOAD
MLV Dimmer	N-600	Indoor	120V AC	120V AC	450W
	N-1000				800W
	N-1500				1200W
	D-600				450W
	M-600				450W
	M-1000				800W

### DIMMING - ELV

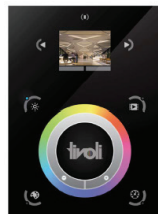
DESCRIPTION	CAT NO	APPLICATION	INPUT VOLTAGE	OUTPUT VOLTAGE	MAX LOAD
ELV Dimmer	ME-600	Indoor	120V AC	120V AC	450W
	DE-300				300W

### DIMMING - DMX

DESCRIPTION	CAT NO	APPLICATION	INPUT VOLTAGE	OUTPUT PROTOCOL	MAX UNIVERSE
DMX Controller	TVOQ-1-WH	Indoor	5V DC	DMX 512	1
	TVOQ-2-BK		6V DC		
	TVOQ-2-WH				
	TVOQ-10-BK-7				
	TVOQ-10-WH-7		6-7V DC		2



**TVOQ-1-WH**  
WH (White only)



**TVOQ-10-XX-7**  
XX = BK (Black), WH (White)



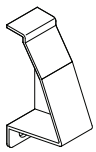
**TVOQ-2-XX**  
XX = BK (Black), WH (White)

# Eclipse Wall Mount Safety Light

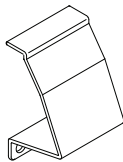
## Ordering Information

PRODUCT CODE	PCB SPACING	LED COLOR	FIXTURE LENGTH
ECL	-	-	- 8.0
ECL = Eclipse Wall System	06 = 6" 12 = 12"	19 = 1900K 27 = 2700K 30 = 3000K 35 = 3500K 40 = 4000K AM = Amber RD = Red BL = Blue	8.0 = 8'

## Mounting Accessories



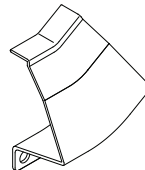
**ECL-EC-L**  
Eclipse End Cap Left  
**ECL-EC-R**  
Eclipse End Cap Right



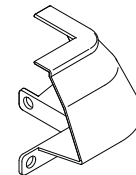
**ECL-C-JNT**  
Eclipse continuous joint



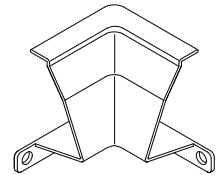
**ECL-D-JNT**  
Eclipse downward joint



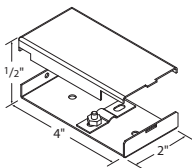
**ECL-U-JNT**  
Eclipse upward joint



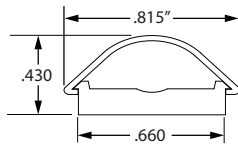
**ECL-OC-JNT**  
Eclipse outside corner joint



**ECL-IC-JNT**  
Eclipse inside corner joint



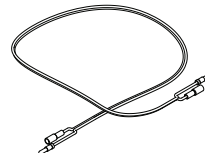
**JBOX-LP**  
Junction box, low profile



**BS-CC-8**  
Wall wireway, 8' Black Base & Conduit Cover



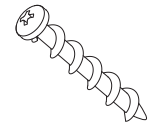
**BSL-PC-1/4**  
1/4" Flex Conduit, Black



**ECLJUMPER2**  
24 inch lead jumper

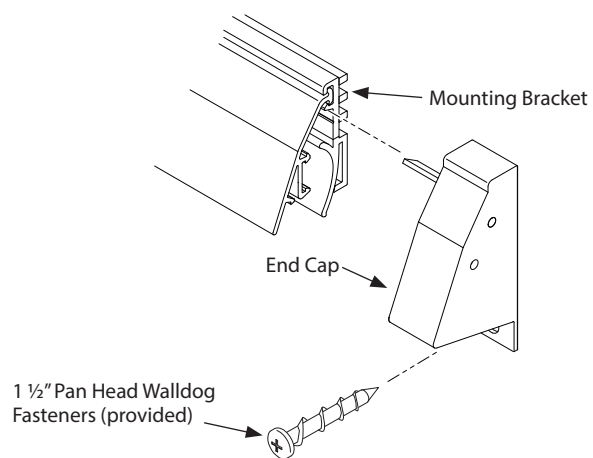
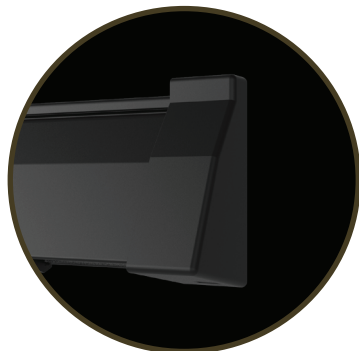


**TM-2-3/8**  
Self tapping wall screw,  
Phillips profile - 2 3/8" length

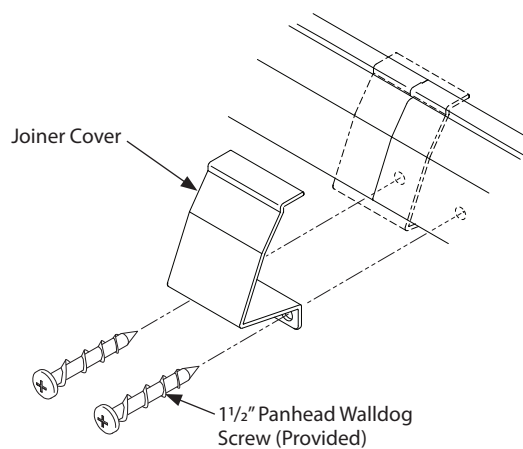
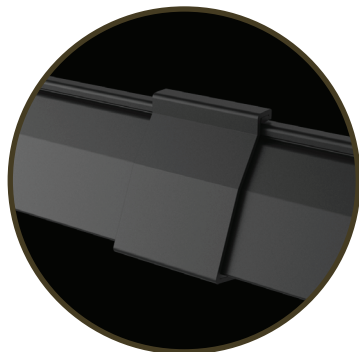


**TM-1-1/2**  
Self tapping, deep cutting,  
corkscrew-like thread,  
Phillips profile - 1 1/2" length

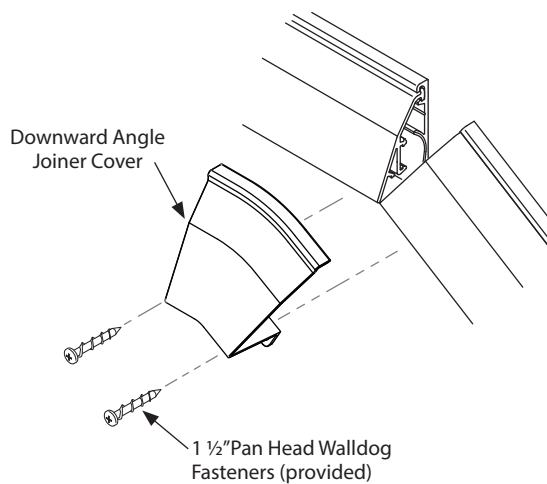
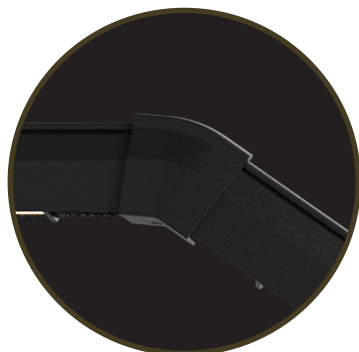
## Right and Left End Caps



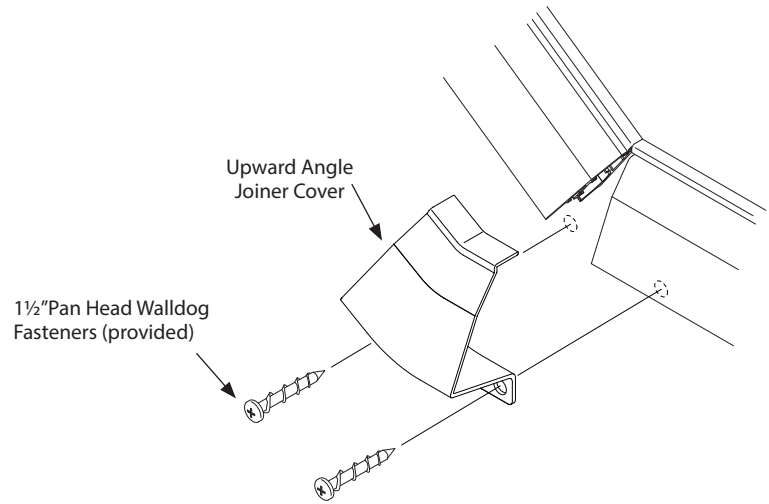
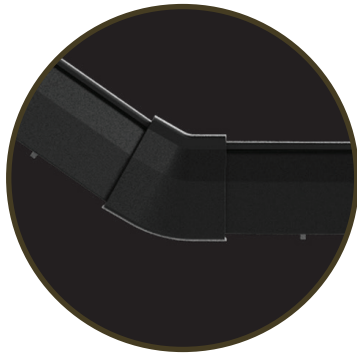
## In-Line Joiner cover *for continuous straight runs*



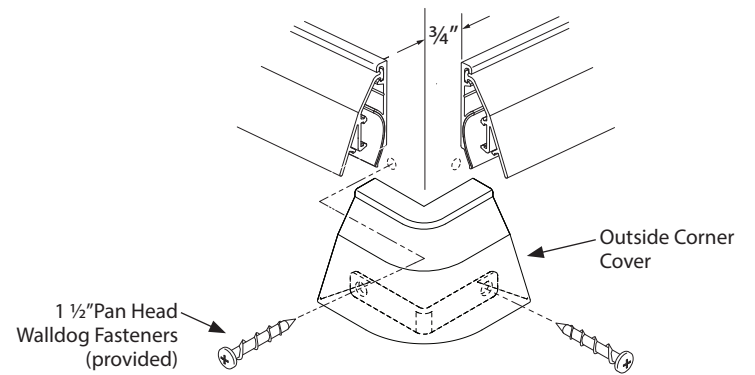
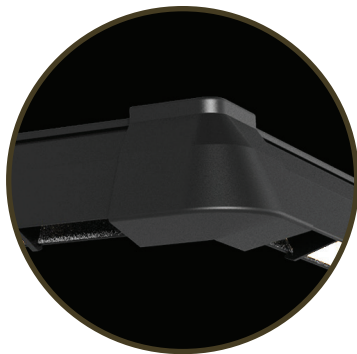
## Downward Angle Joiner



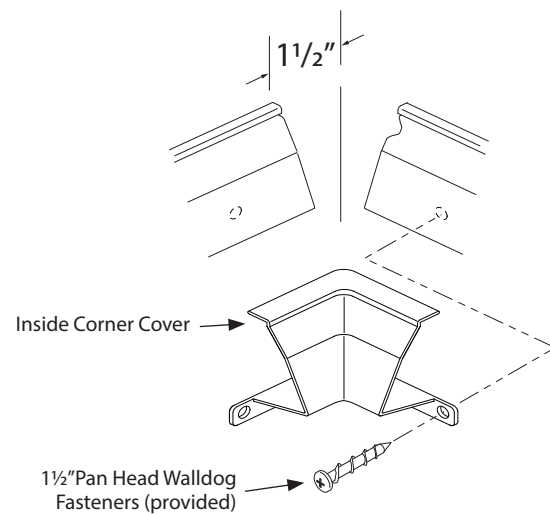
Upward Angle Joiner



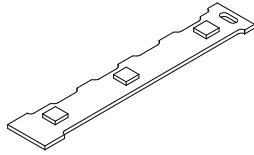
Outside Corner Joiner



Inside Corner Joiner

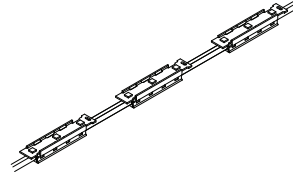


## Replacement Parts



**REPLACEMENT**  
SOLD PER EACH  
**01 SERIES SMD LED PCB BLACK**  
**TTCL-T120-U-19**  
1900K  
**TTCL-T120-U-27**  
2700K  
**TTCL-T120-U-30**  
3000K  
**TTCL-T120-U-35**  
3500K

**REPLACEMENT**  
SOLD PER EACH  
**01 SERIES SMD LED PCB BLACK**  
**TTCL-T120-U-40**  
4000K  
**TTCL-T120-U-AM**  
AMBER  
**TTCL-T120-U-BL**  
BLUE  
**TTCL-T120-U-RD**  
RED

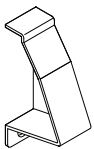


**REPLACEMENT STRAND WITH 6" O.C. LED PCB SPACING**  
SOLD PER FT. - INDICATE AT TIME OF ORDERING.  
**ECL-06-STRAND-19**  
Replacement Strand With 1900K LED  
**ECL-06-STRAND-27**  
Replacement Strand With 2700K LED  
**ECL-06-STRAND-30**  
Replacement Strand With 3000K LED  
**ECL-06-STRAND-35**  
Replacement Strand With 3500K LED

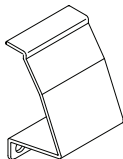
**ECL-06-STRAND-40**  
Replacement Strand With 4000K LED  
**ECL-06-STRAND-AM**  
Replacement Strand With Amber LED  
**ECL-06-STRAND-BL**  
Replacement Strand With Blue LED  
**ECL-06-STRAND-RD**  
Replacement Strand With Red LED

**REPLACEMENT STRAND WITH 12" O.C. LED PCB SPACING**  
SOLD PER FT. - INDICATE AT TIME OF ORDERING.  
**ECL-12-STRAND-19**  
Replacement Strand With 1900K LED  
**ECL-12-STRAND-27**  
Replacement Strand With 2700K LED  
**ECL-12-STRAND-30**  
Replacement Strand With 3000K LED  
**ECL-12-STRAND-35**  
Replacement Strand With 3500K LED

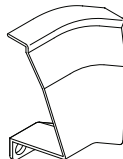
**ECL-12-STRAND-40**  
Replacement Strand With 4000K LED  
**ECL-12-STRAND-AM**  
Replacement Strand With Amber LED  
**ECL-12-STRAND-BL**  
Replacement Strand With Blue LED  
**ECL-12-STRAND-RD**  
Replacement Strand With Red LED



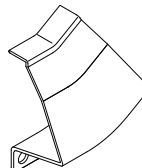
**ECL-EC-L**  
Eclipse End Cap Left  
**ECL-EC-R**  
Eclipse End Cap Right



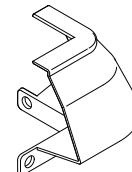
**ECL-C-JNT**  
Eclipse continuous joint



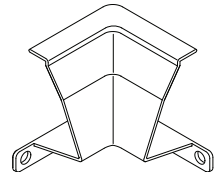
**ECL-D-JNT**  
Eclipse downward joint



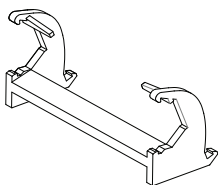
**ECL-U-JNT**  
Eclipse upward joint



**ECL-OC-JNT**  
Eclipse outside corner joint



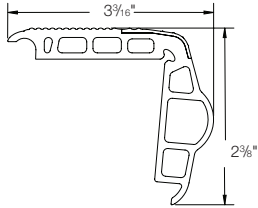
**ECL-IC-JNT**  
Eclipse inside corner joint



**ECL-BAFFLE**  
Eclipse Titanium PCB Baffle



## TwoTone Bullnose & Accessories



**Bullnose Extrusion**

**BNS-TT-GY-12**

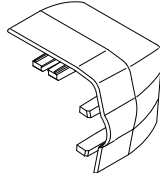
TwoTone Bullnose, 12' length, Black/Gray Strip

**BNS-TT2-GY-12**

TwoTone Bullnose, 12' length, Black/2" Gray Strip

**BNS-SC-GY-12**

Bullnose, Solid Gray, 12' Length



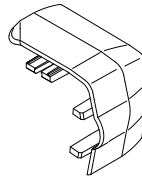
**Bullnose End Caps**

**BNS-TT-EC-L**

End Cap, Left Side Overlap Design, Black

**BNS-TT-EC-R**

End Cap, Right Side Overlap Design, Black



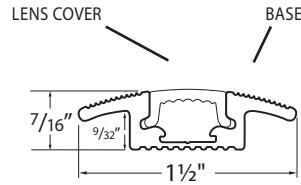
**CC Bullnose End Caps (Carpet-To-Carpet)**

**BNS-CC-TT-EC-L**

End Cap, Carpet-To-Carpet, Left Side, Black

**BNS-CC-TT-EC-R**

End Cap, Carpet-To-Carpet, Right, Black



**CC & CW Wire Way Combo - Base & Lens**

**WW-CC-BK-8**

Carpet to Carpet Base and Cover 8' - Black

**WW-CC-GY-8**

Carpet to Carpet Base and Cover 8' - Gray

**WW-CW-BK-8**

Carpet to Wall Base and Cover 8' - Black

**WW-CW-GY-8**

Carpet to Wall Base and Cover 8' - Gray

**CC & CW Wire Way Base ONLY**

**WW-CW-BS-8**

Base Only, Carpet to Wall, Black, 8'

**WW-CC-BS-8**

Base Only, Carpet to Carpet, Black, 8'

**CC & CW Wire Way Lens ONLY**

**WW-TC-CL-8**

Lens Cover Only, Clear, 8'

**WW-TC-BK-8**

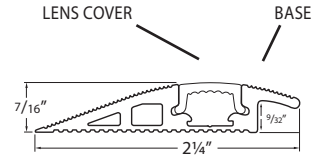
Lens Cover Only, Black, 8'

**WW-TC-BZ-8**

Lens Cover Only, Bronze, 8'

**WW-TC-GY-8**

Lens Cover Only, Gray, 8'



**CE Wire Way Combo - Base & Lens**

**WW-CE-BK-8**

Carpet to Edge Base and Cover 8' - Black

**WW-CE-GY-8**

Carpet to Edge Base and Cover 8' - Gray

**CE Wire Way Base ONLY**

**WW-CE-BS-8**

Base Only, Carpet To Edge, Black, 8'

**CE Wire Way Lens ONLY**

**WW-TC-CL-8**

Lens Cover Only, Clear, 8'

**WW-TC-BK-8**

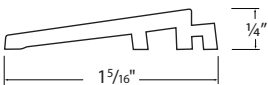
Lens Cover Only, Black, 8'

**WW-TC-BZ-8**

Lens Cover Only, Bronze, 8'

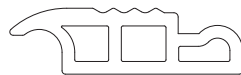
**WW-TC-GY-8**

Lens Cover Only, Gray, 8'



**BNS-TT-R-12**

Step Reducer, 12' Section



**STP-EXTNDR-12**

Bullnose Step Landing Tread Extender, 12'



**ADH-MB-75AM-10**

Extrusion adhesive, 10.1 oz tubes, sold individually, 30 per case.

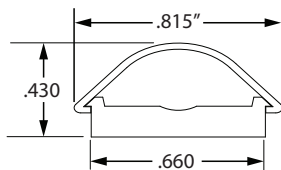
**ADH-MB-75AM-29**

Extrusion adhesive, 29 oz tubes, sold individually, 12 per case.



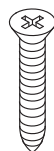
**ADH-IA-10.2-CA**

End Cap Adhesive, Clear liquid adhesive for end caps. 10.2 oz tubes sold individually, 12 per case.



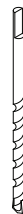
**BS-CC-8**

Wall wireway, 8' Black Base & Conduit Cover



**TM-3/16**

Concrete Screw 3/16" x 1 3/4"



**RONDB-5/32**

Concrete Drill Bit 5/32"